

# REHAB SEATING SOLUTIONS



**BRODA**<sup>®</sup>  
REHAB WHEELCHAIRS

**matrx**<sup>®</sup>  
SEATING SERIES

## TABLE OF CONTENTS

TILT WHEELCHAIRS	3-5
SEATING	6-7
BACKS	8-9
HEADRESTS & OPTIONS	10
CONFIGURE YOUR REHAB CHAIR	11



## BRODA®

When it comes to rehabilitation care, the right wheelchair and cushion can be the difference between a positive patient outcome and a poor one. Broda is committed to configuring chairs that are tailored to the needs of each individual user.

With tilt-in-space functionality, dynamic rocking functions, removable armrests for easy side transfers, and the variety of available footrest and accessory options, our rehab wheelchairs are ideal for clinical use.



## matrix® SEATING SERIES

The Matrix® Seating Series from Motion Concepts is a simple and yet highly effective solutions to meet the widest range of user needs. With the number of new seating and positioning products available today, it is only natural to choose the products that you know best. As the landscape of seating changes, Matrix® stands out for its dedication to innovation, quality and, most of all, your comfort.

HCPCS codes supplied are for reference only and do not ensure coverage or payment. The HCPCS provided are based on our interpretation of the code definitions. HCPCS codes are not intended to be, nor should be considered billing or legal advice. Providers are responsible for determining the appropriate billing codes when submitting claims to the Medicare Program and should consult an attorney or other advisor to discuss specific situations in further detail.

# Encore

## Rehab Wheelchair

The Encore of Comfort, Functionality, and Adjustability



Chair shown with Matrix Libra cushion, Matrix Elite TR back, Matrix Elan Headrest, and swing away footrests. Frame in Carmine Red.

### RECOMMENDED FOR:

More active users who can self propel with hands or feet.

### SPECIFICATIONS

<b>HCPCS</b>	E1161, plus additional coded accessories
<b>Tilt - Infinitely Adjustable</b>	Up to 33° (combined with dynamic rocking)
<b>Weight Capacity</b>	Up to 250 lbs.
<b>Seat Widths</b>	16", 18", 20", 22"
<b>Seat Depths</b>	16", 17", 18", 19", 20"
<b>Back Canes</b>	16", 18", 21", 24" Angle adjustable to 5°, 10°, 15°, 20°
<b>Floor-to-Seat Heights</b>	Adjustable 14" - 19"
<b>Wheels - Casters</b>	5" rear total lock 5" rear aluminum non-locking
<b>Wheels - Mag Wheels</b>	20" or 22" front mount

### FEATURES



Swing away footrests



Elevating, swing away footrests  
HCPCS E0990



Folding back canes

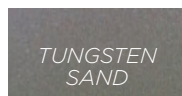
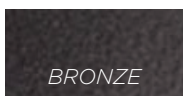
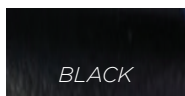


Removable armrests  
HCPCS E0973



Optional dynamic rocking feature

### FRAME OPTIONS





# Comfort

## Rehab Wheelchair

**Simplified Versatility  
and Durability**



**RECOMMENDED FOR:**

*Less active users who need more degrees of tilt for increased pressure relief.*

**SPECIFICATIONS**

<i>HCPCS</i>	<i>E1161, plus additional coded accessories</i>
<i>Tilt - Infinitely Adjustable</i>	<i>Up to 45°</i>
<i>Weight Capacity</i>	<i>Up to 250 lbs.</i>
<i>Seat Widths</i>	<i>16", 18", 20", 22"</i>
<i>Seat Depths</i>	<i>16" - 20"</i>
<i>Adjustable Backrest Angle</i>	<i>5°, 10°, 15°, 20°</i>
<i>Floor-to-Seat Heights</i>	<i>Adjustable 14" - 19"</i>
<i>Wheels - Casters</i>	<i>5" rear total lock 5" rear aluminum non-locking</i>
<i>Wheels - Mag Wheels</i>	<i>20", 22", or 24"</i>

Chair shown with Matrix Libra cushion, Matrix Elite TR back, Matrix Elan Headrest and swing away footrests.

**FEATURES**



Swing away footrests



Elevating, swing away footrests  
HCPCS E0990



Infinitely adjustable tilt



Removable armrests  
HCPCS E0973



Adjustable back recline

**FOR FRAME OPTIONS, VISIT [BRODASEATING.COM](http://BRODASEATING.COM)**



**RECOMMENDED FOR:**

Less independent users who need more degrees of tilt and recline for increased pressure relief.

## Elite

### Rehab Wheelchair

Elite Rehab provides additional degrees of tilt and recline for advanced pressure redistribution and a higher level of comfortable care.

#### SPECIFICATIONS

<b>HCPCS</b>	<i>E1161, plus additional coded accessories</i>
<b>Tilt</b>	<i>up to 40°</i>
<b>Recline</b>	<i>up to 80°</i>
<b>Weight Capacity</b>	<i>Up to 350 lbs.</i>
<b>Seat Widths</b>	<i>16", 18", 20", 22", 24", 26", 28"</i>
<b>Seat Depths</b>	<i>17", 18.5", 20"</i>
<b>Back Length</b>	<i>32", 33.5", 35"</i>
<b>Wheels - Casters</b>	<i>5" rear total lock 5" rear aluminum non-locking</i>
<b>Wheels - Mag Wheels</b>	<i>14", 20", 22"</i>



Chair shown with Matrix PS cushion, pelvic positioning belt, and front caster options. Upholstery in Silvertex Sapphire.

## Latitude

### Rehab Wheelchair

The Latitude Rehab allows for smooth foot and hand propulsion and a unique dynamic rocking feature for mental contentment.

#### SPECIFICATIONS

<b>HCPCS Code</b>	<i>E1161, plus additional coded accessories</i>
<b>Tilt - Infinitely Adjustable</b>	<i>up to 33° (combined with dynamic rocking)</i>
<b>Weight Capacity</b>	<i>Up to 250 lbs.</i>
<b>Seat Widths</b>	<i>16", 18", 20", 22"</i>
<b>Seat Depths</b>	<i>15.5" - 20"</i>
<b>Back Length</b>	<i>32", 33.5", 35"</i>
<b>Floor-to-Seat Heights</b>	<i>Adjustable 14" - 19"</i>
<b>Wheels - Casters</b>	<i>5" rear total lock 5" rear aluminum non-locking</i>
<b>Wheels - Mag Wheels</b>	<i>20", 22"</i>

**RECOMMENDED FOR:**

Less independent users who can self propel with hands or feet.



Chair shown with Matrix PS cushion. Upholstery in Silvertex Sapphire.

**FOR FRAME AND UPHOLSTERY OPTIONS, VISIT [BRODASEATING.COM](http://BRODASEATING.COM)**

# matrix®

SEATING SERIES

## Libra

Cushion



**RECOMMENDED FOR:**

*Those at highest risk, with a history of or existing skin breakdown.*

**Cover** – Moisture resistant Startex cover with zippered side pocket, lifting strap, slip resistant base and hook and loop fasteners for attachment to chair.

**Liner** – Moisture proof urethane slipcover.

**Fluid Sac** – Non-temperature sensitive, no kneading or maintenance required. Three chamber design keeps fluid where it is required. Provides envelopment and shear protection to bony prominences.

**Foam** – High Resilient molded foam made with UltraFresh antimicrobial for odor protection. Contoured pelvic well maintains level pelvis and helps prevent sliding. Waterfall front edge facilitates safe transfers. Molded in loop fabric for easy and secure attachment of Fit Kit accessories if required.

**SPECIFICATIONS**

	Standard Cushion	Heavy Duty Cushion
Weight Capacity	300 lbs	600 lbs
Widths	16", 18", 20"	22", 24"
Depths	16", 18", 20"	18", 20"
HCPCS	E2624	E2625

## Vi

Cushion



**RECOMMENDED FOR:**

*Those at moderate to high risk of skin breakdown.*

**Cover** – Moisture resistant Meshtex cover includes lifting strap, slip resistant base, hook and loop fasteners for attachment to chair.

**Liner** – Wipeable, moisture resistant Startex.

**Top layer** – Molded HR (high resilient) foam made with UltraFresh antimicrobial for odor protection. Contoured for midline leg position and waterfall undercut to facilitate safe transfers.

**Ischial insert** – Supersoft viscoelastic foam insert for envelopment and protection of bony prominences.

**Bottom Layer** – Firm HR foam base provides stability and protection against bottoming out.

**SPECIFICATIONS**

	Standard Cushion	Heavy Duty Cushion
Weight Capacity	300 lbs	600 lbs
Widths	16", 18", 20"	22"
Depths	16", 18", 20"	18", 20"
HCPCS	E2607	E2608

For convenience, all seating options ship on chair.

## PSP

### Cushion



#### RECOMMENDED FOR:

Those at moderate to high risk of skin breakdown.

**Cover** - Reversible, moisture resistant Startex cover can be used fabric or wipeable side out. Hook and loop fasteners for attachment to chair.

**Linier** - Wipeable, moisture resistant Startex.

**Polymer Insert** - Molded-in polymer gel provides extra skin protection and shear reduction.

**Foam** - High Resilient molded foam made with UltraFresh antimicrobial for odor protection. Waffled ischial relief area immerses pelvis and helps prevent sliding. Waterfall front edge to facilitate safe transfers.

#### SPECIFICATIONS

	Standard Cushion
Weight Capacity	300 lbs
Widths	16", 18", 20"
Depths	16", 18", 20"
HCPCS	E2607

## PS

### Cushion



#### RECOMMENDED FOR:

Those at low to moderate risk of skin breakdown.

**Cover** - Moisture resistant Startex cover with zippered side pocket, lifting strap, slip resistant base and hook and loop fasteners for attachment to chair.

**Linier** - Moisture proof urethane slipcover.

**Foam** - High Resilient molded foam made with UltraFresh antimicrobial for odor protection. Contoured pelvic well maintains level pelvis and helps prevent sliding. Waterfall front edge facilitates safe transfers. Molded in loop fabric for easy and secure attachment of Fit Kit accessories if required.

**Ischial relief area** - Waffled ischial relief area immerses pelvis and helps prevent sliding.

#### SPECIFICATIONS

	Standard Cushion	Heavy Duty Cushion
Weight Capacity	300 lbs	600 lbs
Widths	16", 18", 20"	22", 24", 26"
Depths	16", 18", 20"	18", 20"
HCPCS	E2605	E2606



# BACKS

## matrix® SEATING SERIES

### Easy Set Hardware

*Included on all backs*



#### ROTATION

*Back may be oriented to accommodate pelvic/trunk rotation*



#### ANGLE

*20° posterior/anterior range of back angle adjustment in front of back canes*



#### DEPTH

*Adjusts 2" behind back canes*



#### DEPTH

*Adjusts 2" in front of back canes*

## Elite TR

*Backs*



#### RECOMMENDED FOR:

Specially designed for those with tilt or tilt/recline wheelchairs.

**Shell** - Designed with extra support behind the shoulders. Aluminum shell has cutouts for lifting and breathability.

**Foam** - Two layer HR (high resilient) foam construction with supersoft overlay for extra immersion and comfort.

**Cover** - Meshtex moisture resistant cover with foam overlaps the shell to provide comfort and protection.

**Hardware** - Easy adjustment of height/depth/angle and rotation for optimal positioning. Quick release for portability.

#### SPECIFICATIONS

	Standard Back	Heavy Duty Back
Weight Capacity	300 lbs	500 lbs
Widths	16", 18", 20"	22", 24"
Heights	16", 18", 20"	20"
Contour Depth	3"	-
HCPCS	E2620	E2621

**For convenience, all back options ship on chair.**

## Elite/Elite Deep

*Backs*



### RECOMMENDED FOR:

Active users who want shoulder or hip clearance, or ability to use add-on lateral supports Compatible with Encore Rehab and Comfort Rehab

**Shell** - Contoured aluminum with cutouts for lifting and breathability. Available in standard (3") OR deep (6") contours.

**Foam** - HR (high resilient) foam enclosed in cover.

**Cover** - Meshtex moisture resistant cover with foam overlaps the shell to provide comfort and protection.

**Hardware** - Easy adjustment of height/depth/angle and rotation for optimal positioning. Quick release for portability.

### SPECIFICATIONS

	Standard Back	Heavy Duty Back
Weight Capacity	300 lbs	500 lbs
Widths	16", 18", 20"	22", 24", 26"
Heights	16", 18", 20"	16", 18", 20"
Contour Depth	3"	6"
HCPCS	E2620	E2621

## PB/PB Deep

*Backs*



### RECOMMENDED FOR:

Less active users who want exceptional comfort and a gently contoured shape.

**Shell** - Lightweight ABS shell available in standard (5") or deep (7") contour depths.

**Foam** - Molded HR (high resilient) foam made with UltraFresh antimicrobial for odor protection.

**Cover** - Attractive, moisture resistant Meshtex upholstered cover.

**Hardware** - Easy adjustment of height/depth/angle and rotation for optimal positioning. Quick release for portability.

### SPECIFICATIONS

	Standard Back
Weight Capacity	300 lbs
Widths	16", 18", 20"
Heights	16", 20"
Contour Depth	5", 7"
HCPCS	E2615

# HEADREST

## Elan Headrest

## matrix® SEATING SERIES



### HARDWARE



Highly Adjustable  
HCPCS E0128

### FEATURES



Tool-less Adjustment levers

### OPTIONS



Standard pad  
HCPCS E0955



4-point Pad  
HCPCS E0955

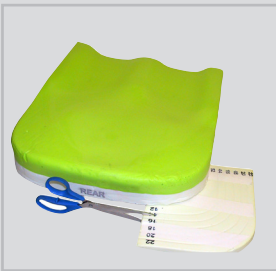


4-point Pad  
with Headband  
HCPCS E0955

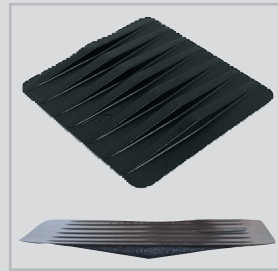


Ergonomic Adjustment Knob

## SEATING OPTIONS



**PELVIC OBLIQUITY KIT**  
Designed to accommodate up to 1" obliquities.



**CUSHION RIGIDIZER**  
Level support that eliminates hammock effect of sling seat upholstery. Securely fitted to bottom of foam cushion inside the cushion cover.  
HCPCS E0992

### LIBRA CUSHION OPTIONS

- Anterior Seat Wedge
- Hemi Wedge
- Libra Fluid Supplement
- Libra Abductor
- Tapered Wedges



## BACK OPTIONS



**FIXED LATERALS**  
Height adjustable, installed inside back shell.  
HCPCS E0956



**SWING-AWAY LATERALS**  
Height adjustable, installed inside back shell  
HCPCS E0128



**PRIVACY FLAP**  
Fits widths: S 16", M 18", L 20", XL 22", XXL 24"



# Configure Your Rehab Chair

More Independent

Less Independent

## Step 1: Select Chair Frame

**BRODA**



Chair	Encore Rehab	Latitude Rehab	Comfort Rehab	Elite Rehab
Features	250 lbs. weight capacity up to 33° Tilt Dynamic Rocking HCPCS E1161	250 lbs. weight capacity up to 33° Tilt Dynamic Rocking HCPCS E1161	250 lbs. weight capacity up to 45° Tilt HCPCS E1161	350 lbs. weight capacity up to 40° Tilt up to 80° Recline HCPCS E1161

For convenience, all Matrx® options ship on chair.

## Step 2: Select Seating

More Pressure Reduction

Less Pressure Reduction

**matrx**  
SEATING SERIES



Cushion	Libra HCPCS E2624/E2625	Vi HCPCS E2607/E2608	PSP HCPCS E2607	PS HCPCS E2605/E2606
---------	----------------------------	-------------------------	--------------------	-------------------------

Encore Rehab or Comfort Rehab

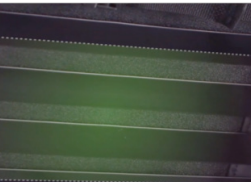
Latitude Rehab or Elite Rehab

## Step 3: Select Back

More Supportive

More Accommodating

**matrx**  
SEATING SERIES



Back	Elite TR HCPCS E2620/E2621	Elite & Elite Deep HCPCS E2620/E2621	PB & PB Deep HCPCS E2615	Comfort Tension Seating® Additional Positioning Package (APP) HCPCS E2611/E2612
------	-------------------------------	---	-----------------------------	---

Encore Rehab or Comfort Rehab

## Step 4: Select Headrest

**matrx**  
SEATING SERIES



Headrest	Elan Headrest HCPCS E0955/E0128
----------	------------------------------------

## Step 5: Select Additional Accessories

Seating & Back Options

Pelvic Obliquity Kit, Cushion Rigidizer, Seat Wedges, Abductors, Fluid Supplements, Fixed and Swing Away Laterals, Privacy Flap

Chair Accessories

Swing Away, Removable, and Elevating Footrests, Removable and Swing Away Armrests



1 (844) 552-7632  
[brodaseating.com](http://brodaseating.com)

**BRODA**®

**matrix**®  
SEATING SERIES